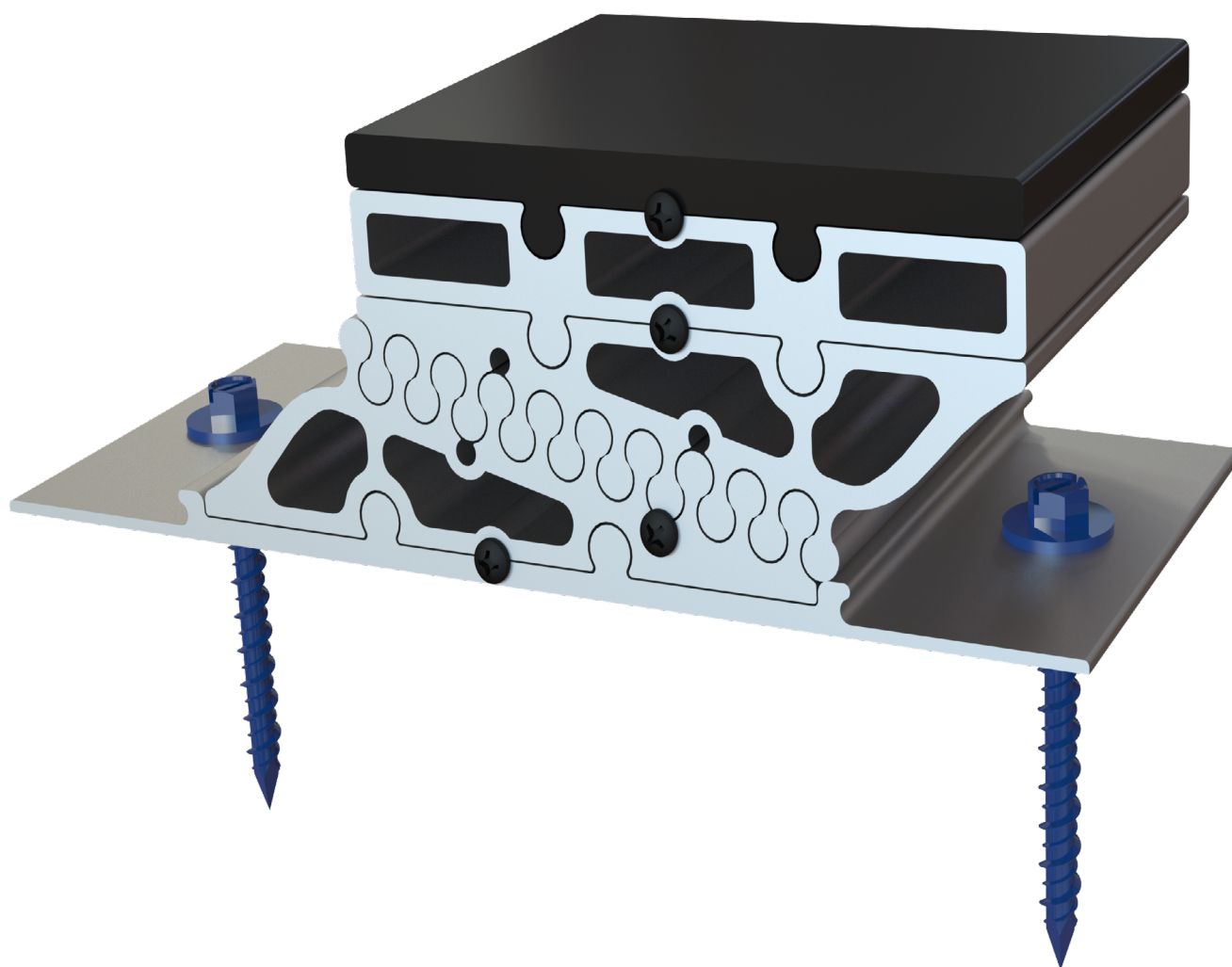




Installation Manual

SHIM-ME



SCAN THE QR CODE
FOR ASSEMBLY VIDEO

English

IMPORTANT SAFETY WARNINGS

Make sure to install the SHIM-ME as leveled as possible.



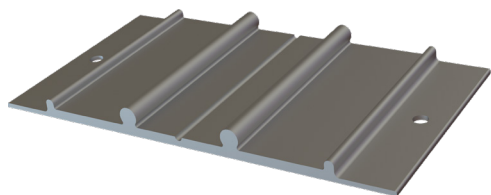
WARNING:

- Install the number of SHIM-ME's as required to support system
- Some assistance may be required



PARTS LIST

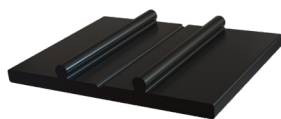
The following parts are included with your assembly.



BASE PLATE



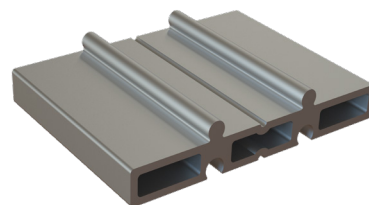
SCREWS



THERMAL BREAK



BASE WEDGE &
ADJUSTABLE WEDGE



1/2" EXTENSION

Additional Items Needed

The following parts are not included.



Water Proof
Sealant

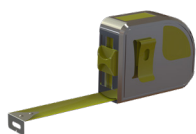


Wood Or
Concrete Anchors



TOOLS LIST

The following tools are recommended for this installation.



Tape Measure



Hand Level



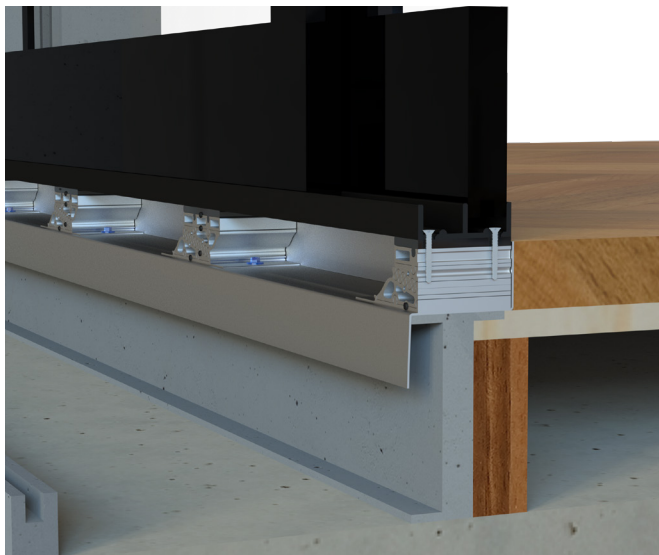
Power Drill With
1/4" Drill Bit



Power Drill Or
(Phillips Screwdriver)

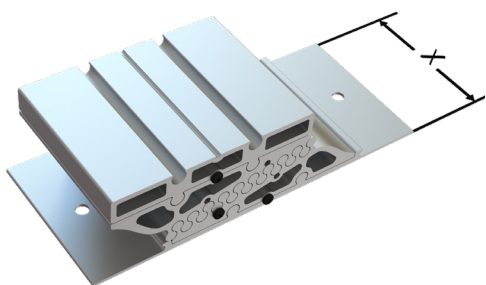


APPLICATION



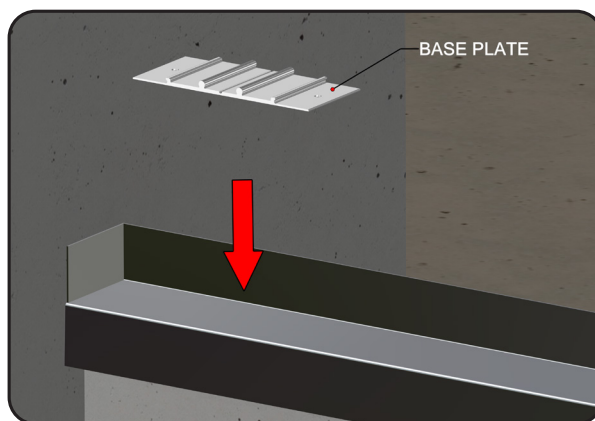
The SHIM-ME system can be used for both Windows or Doors. The units must be installed prior to final Window or Door Installation.

CHOOSE REQUIRED WIDTH SIZE



Check your window or door opening size for the required width. The SHIM-ME width should fit your Sill Pan. (Pan Not Included) Custom sizes available.

STEP 1 INSTALLING THE BASE PLATES

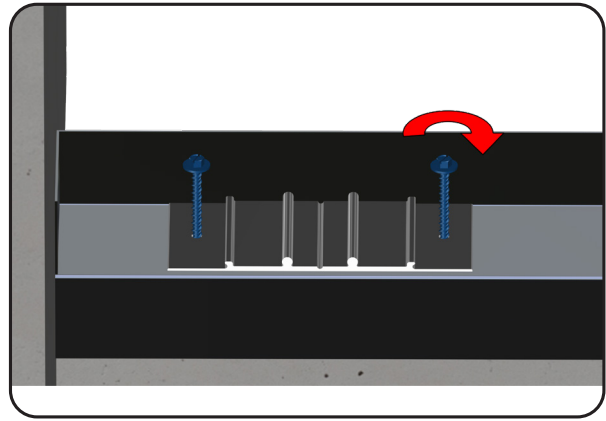
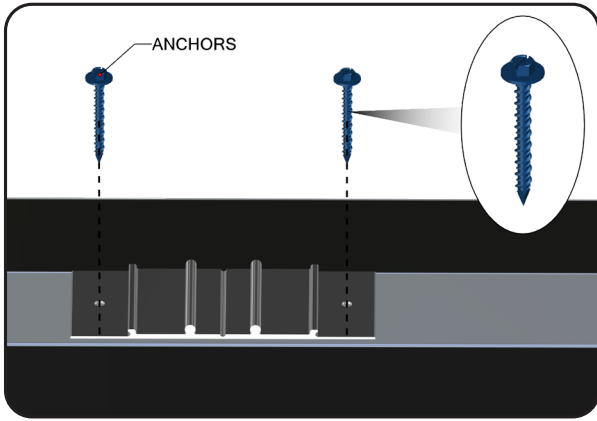


Begin step one by locating the Sill Pan, and placing it over the location where you intent to install your Door or Windows.

The Sill Pan is not included with your assembly.

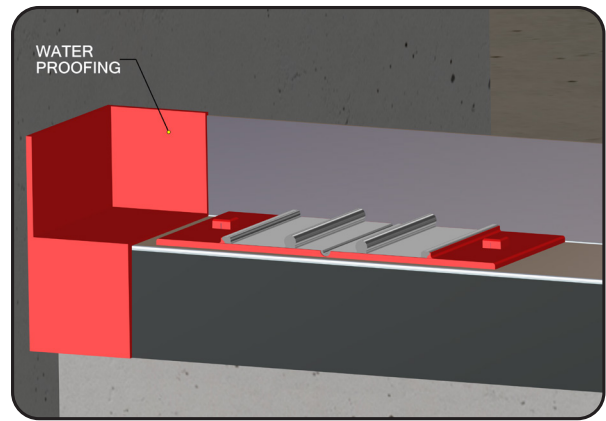
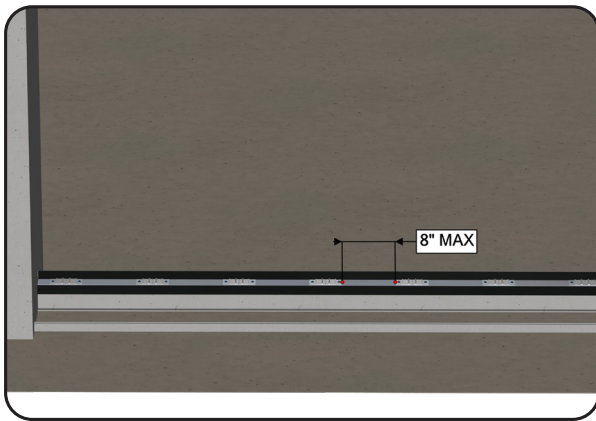
Slowly lower, and set it into place. Next, locate the corner, and place the Base Plate.



STEP 1**INSTALLING THE BASE PLATES**

Place the base plate a couple inches from the end, and place it with the flat face facing down. Drill the two anchor bolts using a power drill.

Next, secure the base plate using the provided anchors. The type of anchors used depend on your application. Check your project needs for the correct type of anchors. Fully secure the anchors as required.



Repeat these steps, and attach the remaining base plates as required. Place each set with a max eight-inch spacing, edge to edge.

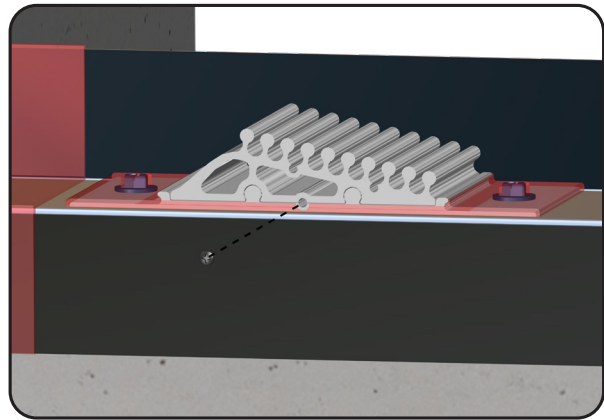
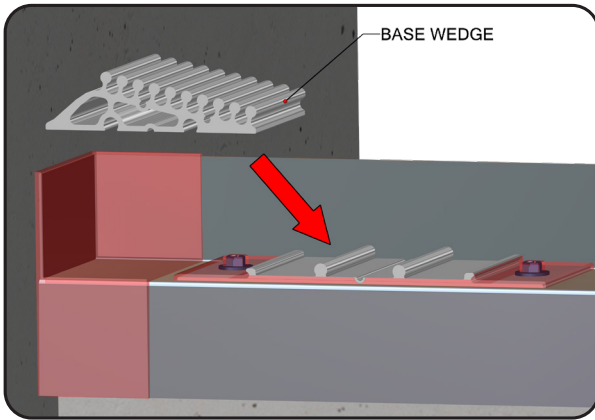
Fully secure all base plates. After securing all base plates, apply water proofing.

Apply water proofing as required. Make sure to fully water proof the anchors, and base plates.



Repeat these steps, and water proof all of the base plates. After water proofing is complete, step 1 is now complete.

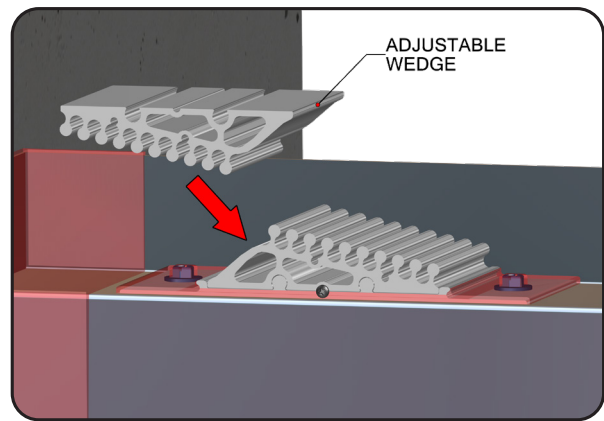
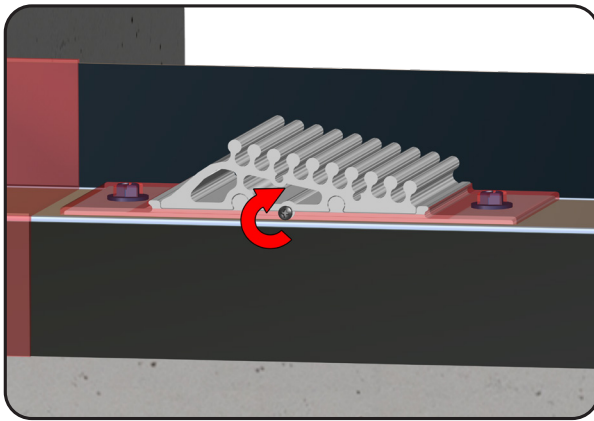




Begin step 2 by locating the Base Wedge. The base wedge slides on to the base plate.

Set the Base Wedge Infront of the Base plate, and matching the bottom slots, slide the Wedge into place.

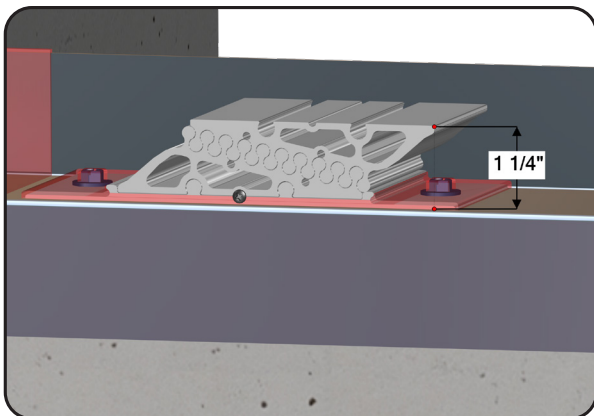
Slide the Wedge flush with the base plate. Next, secure the Base Wedge using the provided screw.



Fully tighten the screw using a Phillips screwdriver. Next, attach the adjustable wedge.

To attach the adjustable wedge, slide the Wedge on to the previously installed Base Wedge.

Matching the slots, slide the Wedge into place. If you match all of the grooves, and slide the Wedge fully covering all of the grooves, then the Adjustable Wedge would be placed in the lowest possible height.



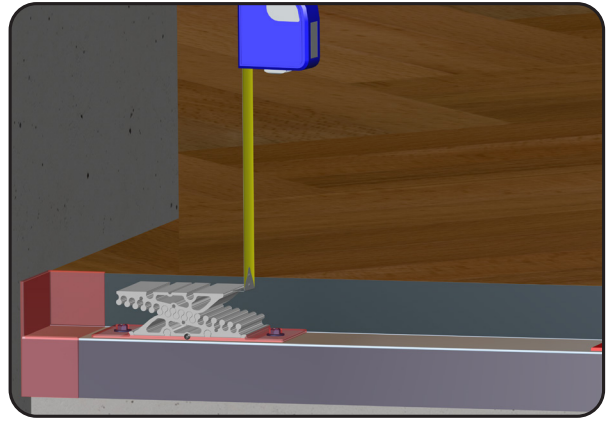
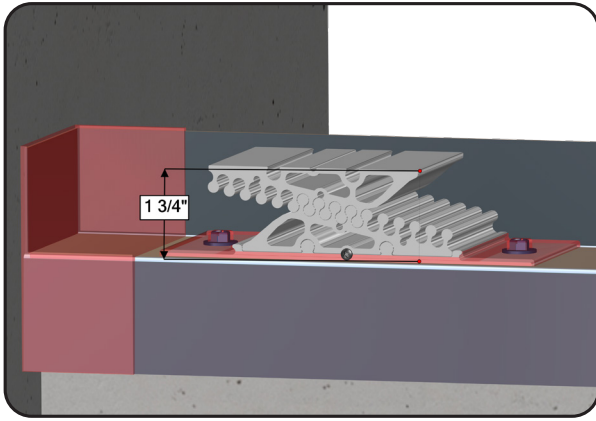
The lowest height spacing you can have is about one, and one quarter of an inch.

To adjust the height, pull the adjustable wedge out, and slide it over to the next notch over.

Each slot allows you to adjust the height at about 1/16 on an inch.

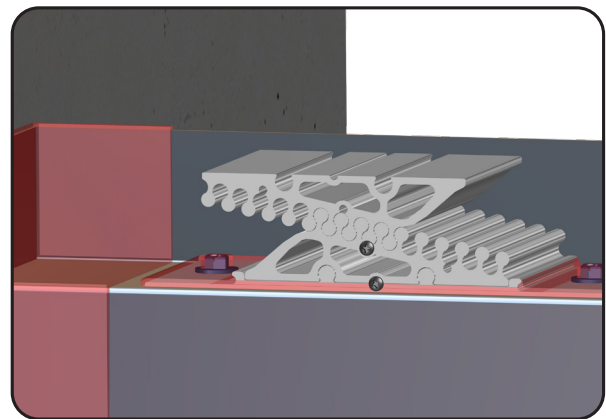
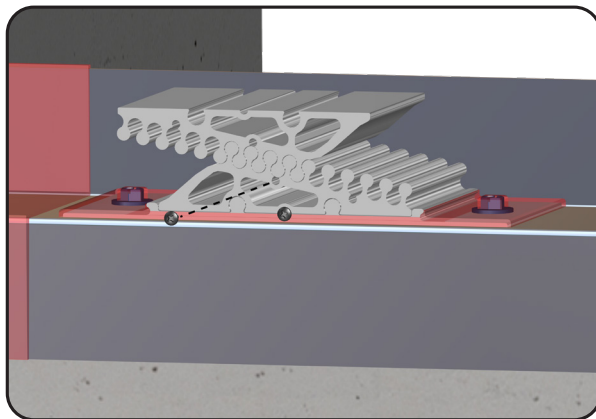


STEP 2 INSTALLING THE BASE AND ADJUSTABLE WEDGE



The maximum adjustable height is about one and three quarters of an inch.

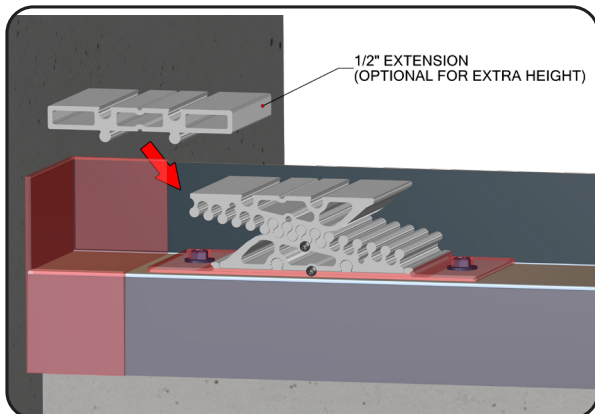
Place the wedge to the required height. Using a tape measure, measure from the top of the Shim assembly to the finished floor.



After choosing the required height, secure the adjustable wedge, to the base wedge, using the provided screw.

Fully tighten the screw using a Phillips screwdriver. After the Adjustable Wedge is fully secured, step two is now complete.

STEP 3 INSTALLING THE OPTIONAL EXTENSION AND THERMAL BREAK



The Shim-Me assembly can be extended to provide an extra height. The Shim-Me comes with a half inch, extension.

This is optional for projects that required extra height past the 1 3/4 inch. If no extension is required, you may skip this step.

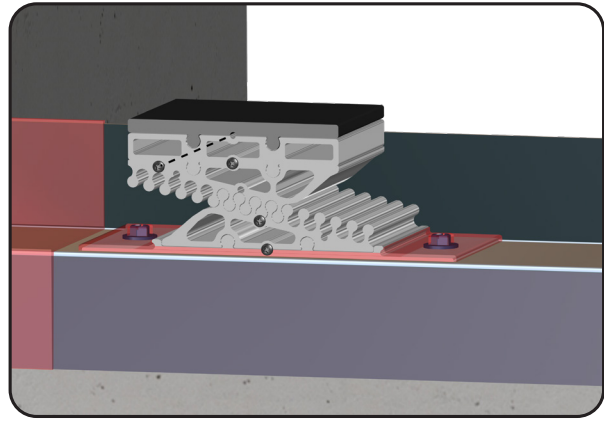
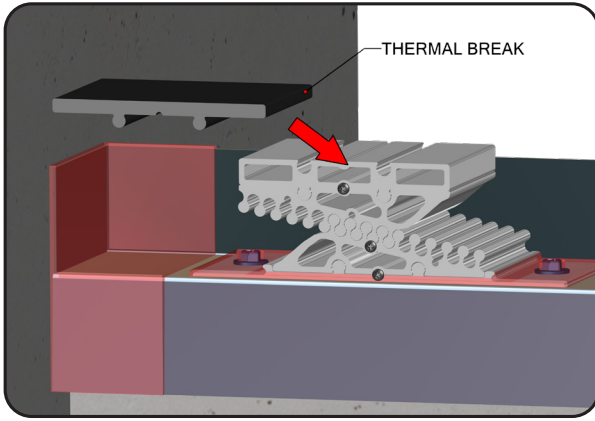
To attach the half inch extension, slide it on to the Adjustable Wedge.

Matching the notches, slide it into place. Secure the extension using the provided screw.



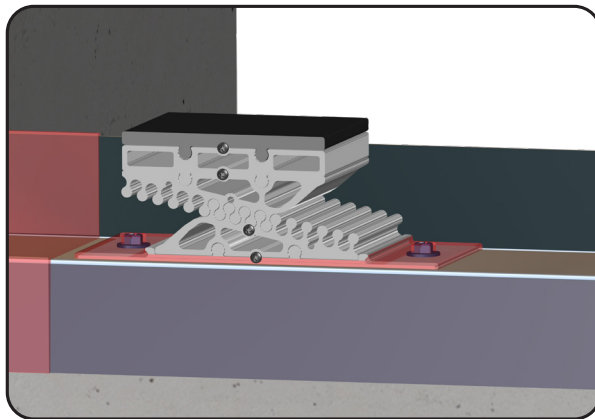
STEP 3

INSTALLING THE OPTIONAL EXTENSION AND THERMAL BREAK



Next, attach the thermal break. The thermal break can be installed to the half inch extension, or to the adjustable wedge.

To attach the thermal break, slide the bottom notches to the assembly. Slowly slide it into place. Once in place, Secure the Thermal break using the provided screw.

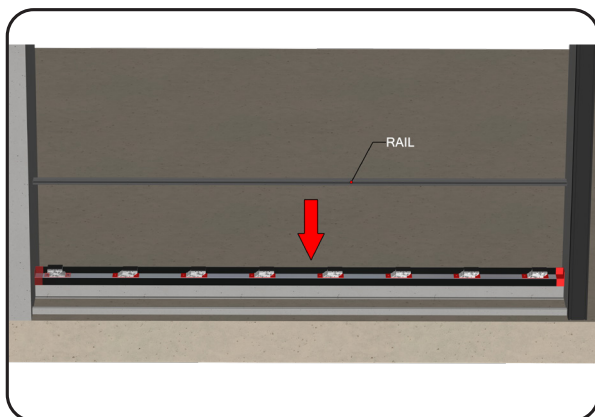


Repeat these steps, and assemble the remaining Shim-Me assemblies as required.

Once all Shim-Me assemblies are complete, step three is now complete.

STEP 4

INSTALLING THE WINDOW OR DOOR RAIL

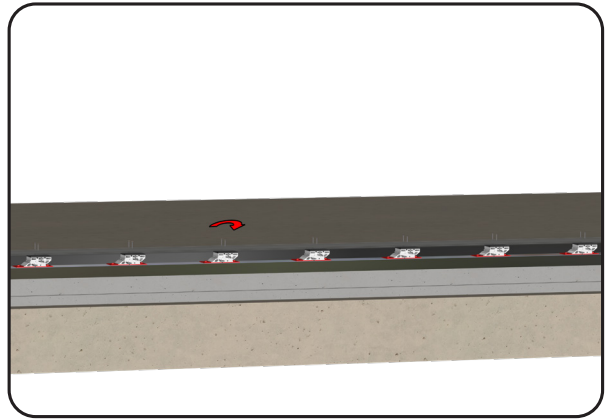
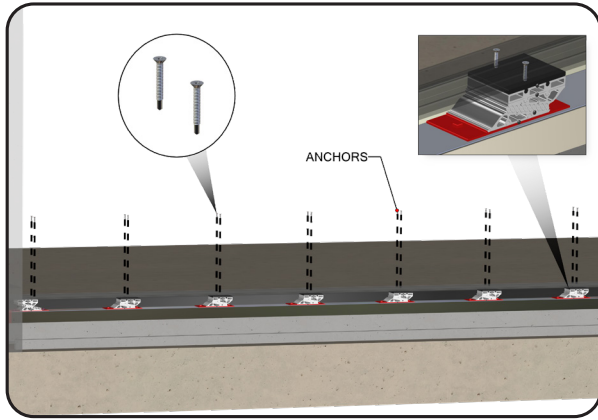


After all of the shim-me assemblies are fully secured, and water proofed, then you may attach the door or window rail.

Place the Bottom Window or Door Rail, on to p of the shim-me assemblies.

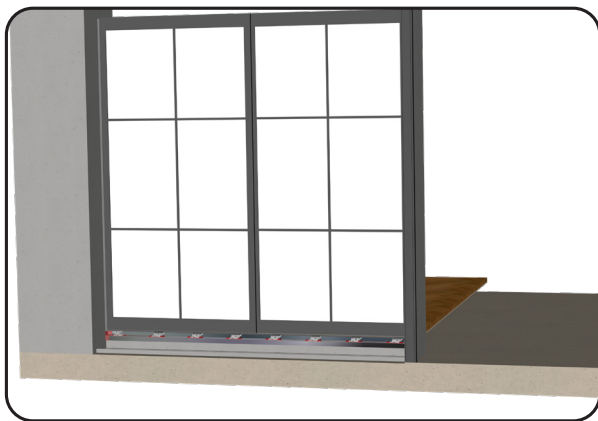
Slowly lower the rail into place, over the thermal break.





Next, secure the rail using the required anchors.

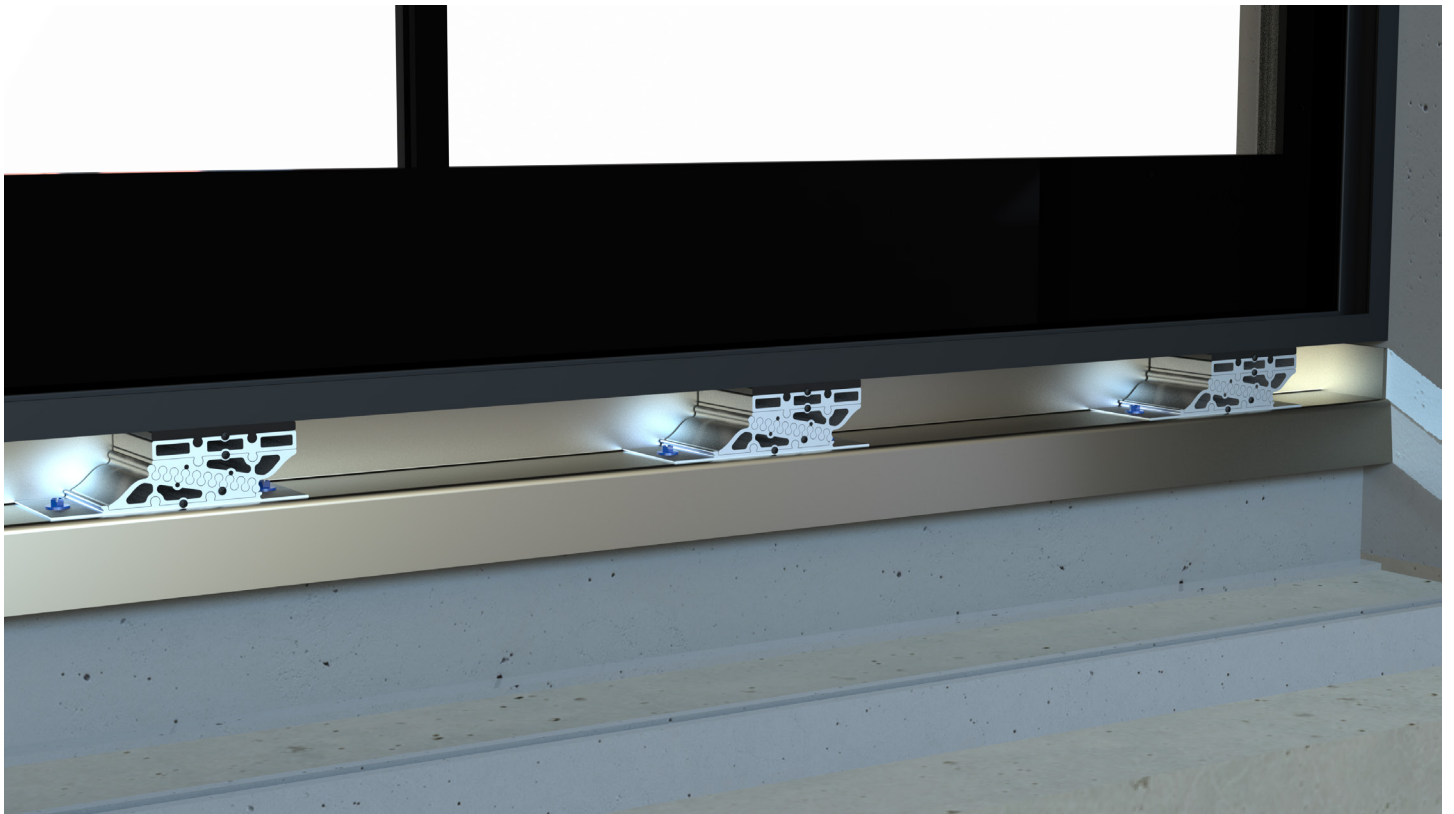
Insert the anchors through the rail, and into the shim-me assemblies. Fully secure the anchors as required. After securing the Rail, you may now install the windows or doors.



Install Windows Or Doors per your project specifications.

Congratulations! Installation of the Shim-Me is now complete.
Enjoy your new Shim-Me!





TECHNICAL SUPPORT

Visit Us Online

<https://shim-me.com/>

